

SPECIAL EDUCATION:

A SERVICE ...



NOT A PLACE

Nicole Roy and Diane Tallman

Special Education Supervisors



TODAY'S GOALS

- Describe special education supports and services
 - within T/E Schools
 - operated by other agencies
- Explain related services

Available Supports





SPECTRUM OF STUDENT SUPPORTS

School Counselors

School Nurses

Reading Support

Math Support

English Language Learner (ELL) Support

Instructional Support Teams

Student Assistance Program

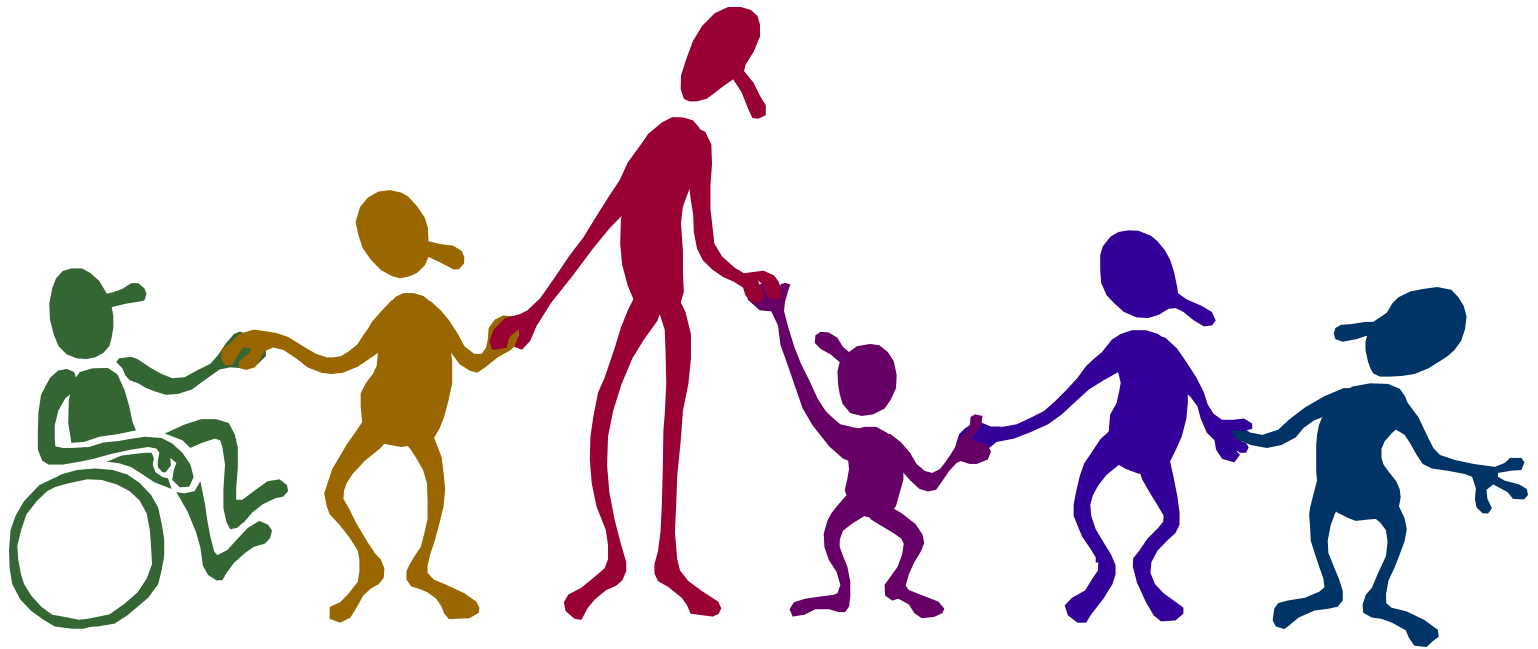
Mental Health Specialists

School Psychologists

Gifted Education Support

Special Education Support

Special Education Supports



Continuum of Services

- ...the full range of services and programs under this chapter are available to children with disabilities.

22 Pa. Code 14.104(f)(2)





Types of Special Education Support

- Autistic support
- Blind and visually impaired support
- Deaf or hard of hearing support
- Emotional support
- Learning support
- Life skills support
- Multiple disabilities support
- Physical support
- Speech and language support

Types of Service

- Itinerant
- Resource
- Part-time
- Full-time



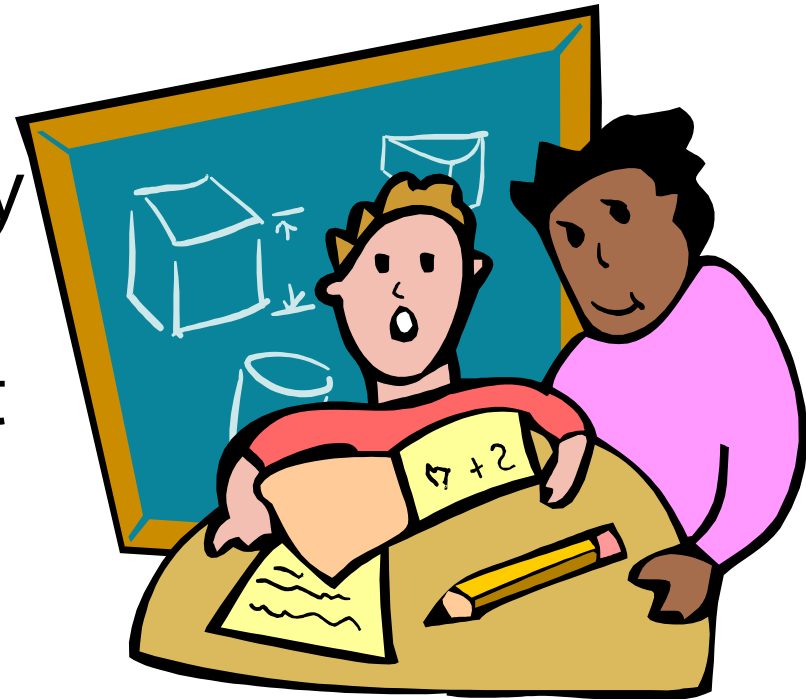
Least Restrictive Environment



- Exceptional students shall be educated to the maximum extent appropriate with students who are not exceptional

LRE placement decision

- Consideration of the general education class must be the starting place for any decision-making about the placement of any special education support





LRE and FAPE

- In order to assess whether appropriate educational benefits can be provided in the general education environment, one must look at:
 - the environment as it is
 - the environment as it might be when augmented with supplementary aids and services



Key principle: LRE

- Removal from the general education environment only when the nature and intensity of the need is such that education with supports cannot be achieved satisfactorily
 - Can this child's needs be met in the general education environment?



T/E Special Education Programs

- K-12 Learning Support
 - students whose greatest need is for help in academic areas such as reading and math
 - itinerant, resource, part-time



T/E Special Education Programs

- 2-12 Emotional Support
 - students who have decreased motivation to learn, learning differences, difficulty with social skills or reading social cues, depression and/or anxiety, school phobia or school avoidance, difficulty with peers, eating disorders
 - itinerant, resource, part-time



T/E Special Education Programs

- K-12 Speech and language support
 - students who have difficulty speaking or communicating
 - articulation, fluency, language, or voice
 - itinerant



Out of District Programs: Type of Service = Part-time

- Provider: Chester County Intermediate Unit
 - Autistic Support
 - Life skills support
 - Multiple disabilities support
 - Emotional support - K-8
 - Deaf and Hearing Impaired



Out of District Programs: Type of Service = Full-time

- Child and Career Development Center
- Approved Private Schools
 - Vanguard School
 - Pathway School
 - Wordsworth Academy
 - Martin Luther School
 - Timothy School
 - Devereux Schools
 - Davidson School at Elwyn

Out of District Programs: Alternative Programs

- Choices
- Center for Alternative Secondary Education
- STEPS
- Middle College High School
- Chester County High School
- Reach, Horizons, Impact, Care, Teach



RELATED SERVICES



- As required in IEP
 - Adaptive Phys. Ed.
 - Counseling
 - Extended School Year
 - Occupational Therapy
 - Physical Therapy
 - Social skills groups
 - Speech and language